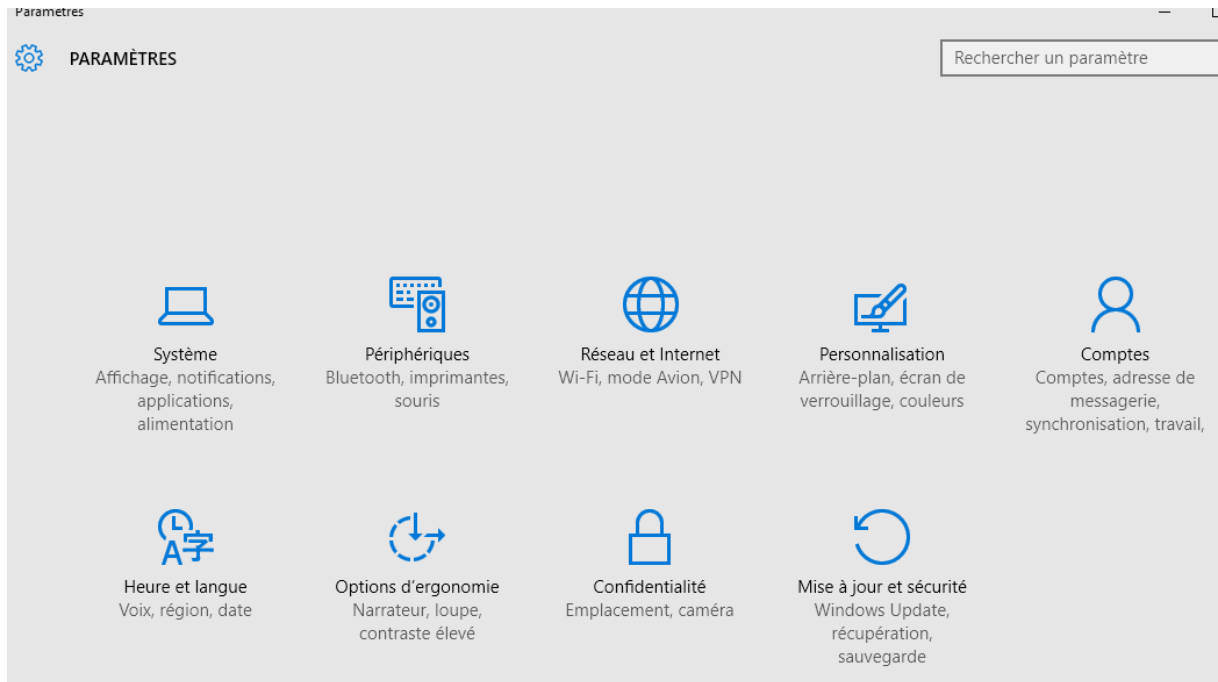
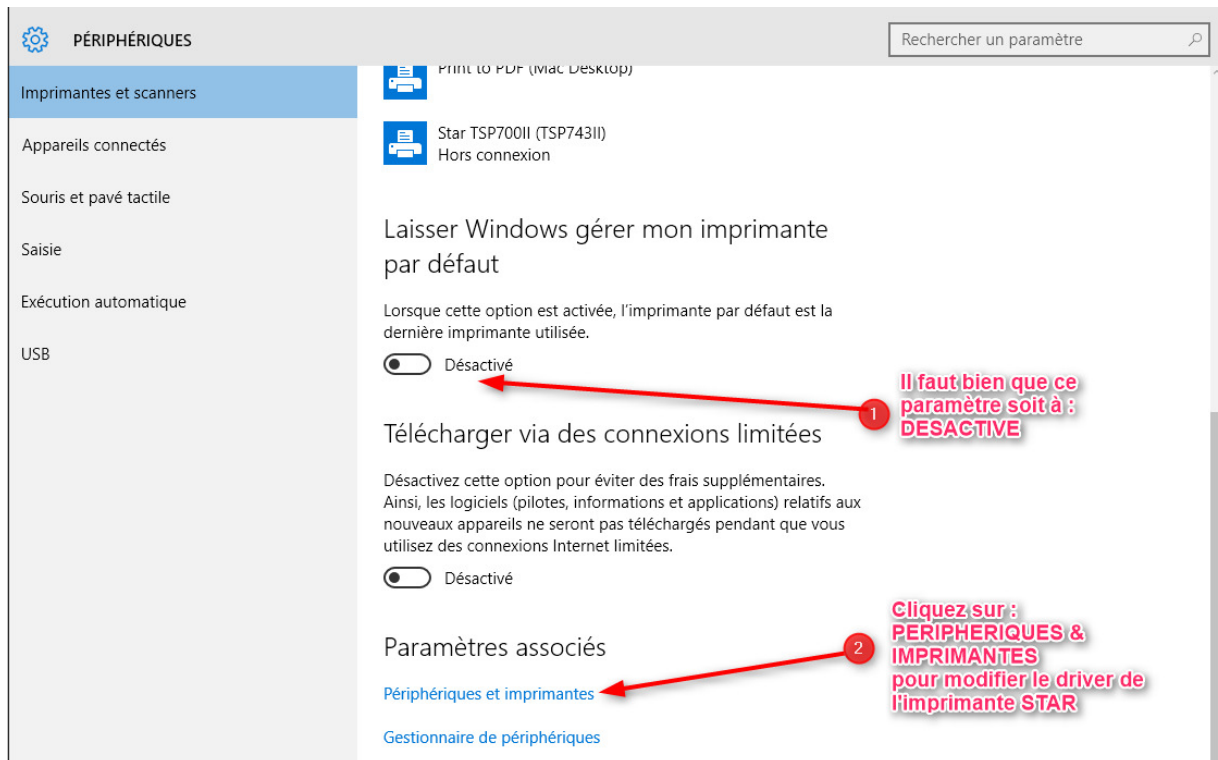


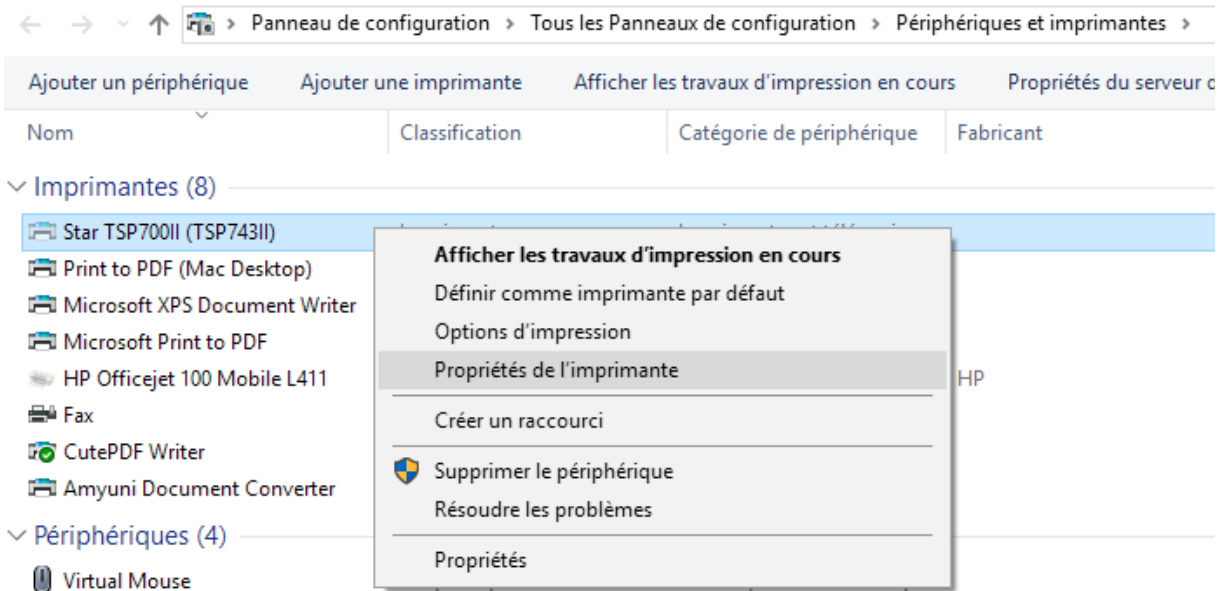
PARAMÉTRAGE STAR TSP700II -> WINDOWS 10

DEMARRER -> PARAMETRES



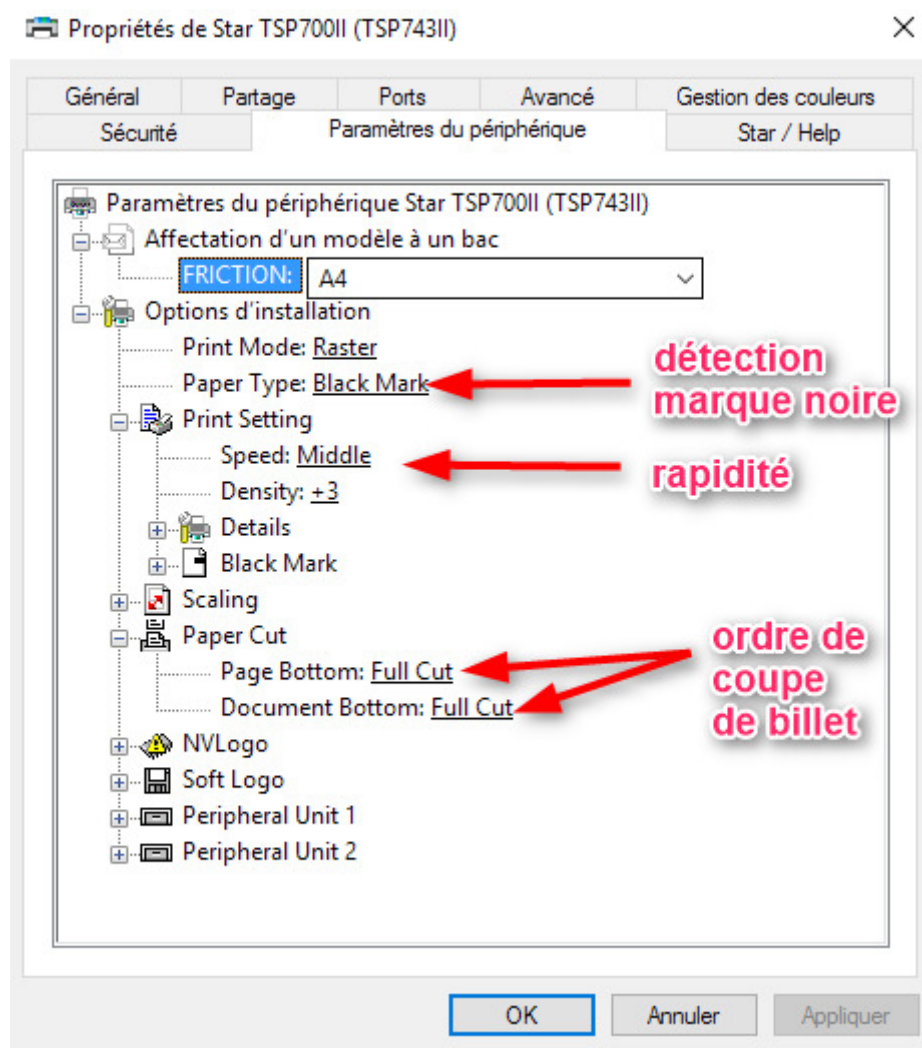
Cliquez sur : PERIPHERIQUES





SELECTIONNEZ l'imprimante STAR TSP700II

CLIC DROIT -> PROPRIETE DE L'IMPRIMANTE



ACTIVEZ LES PARAMETRES CI-DESSUS puis OK